

Mike Konshak's

PRO-AM

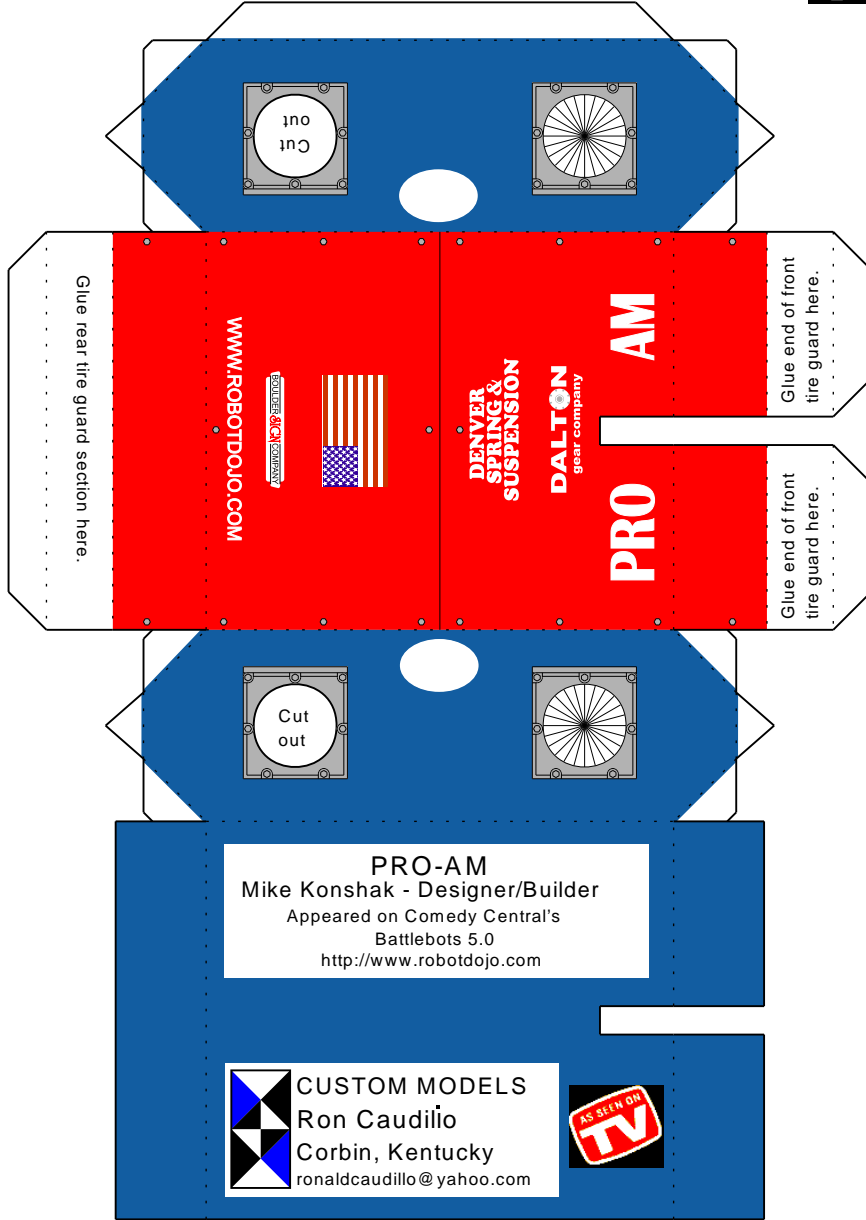
Scale: 1/10

Model design by
RON CAUDILLO

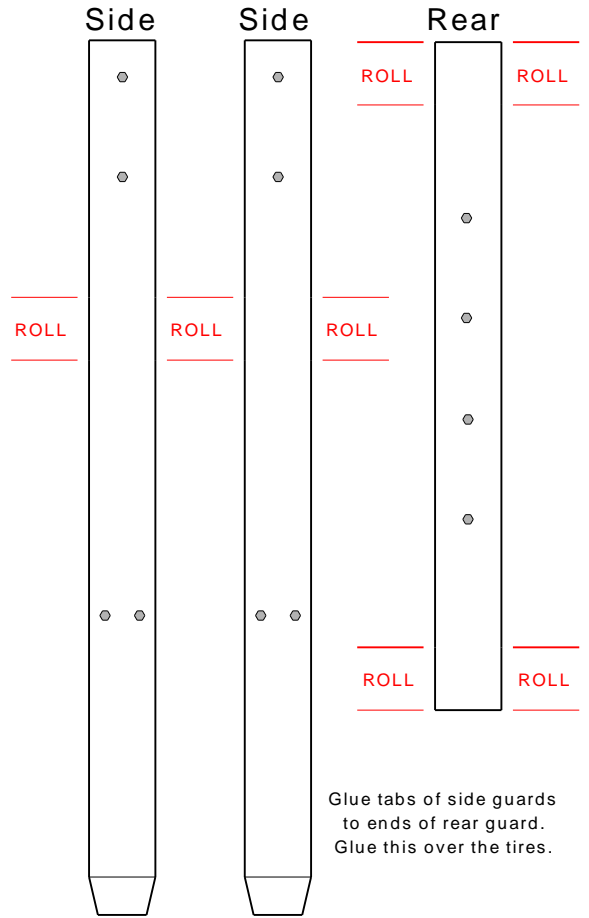
Battlebots 5.0



CHASSIS Cut along "spokes" where front axle goes

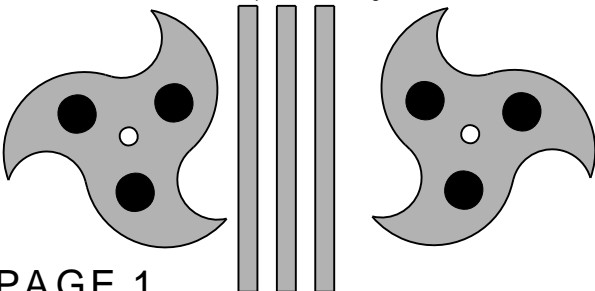


TIRE GUARDS

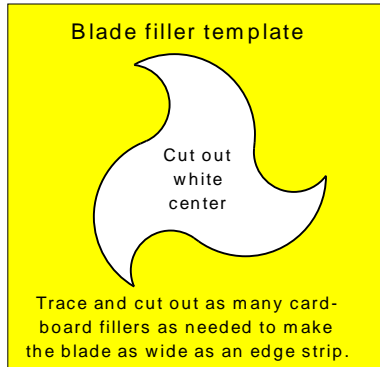


BLADE - sides and edge strips

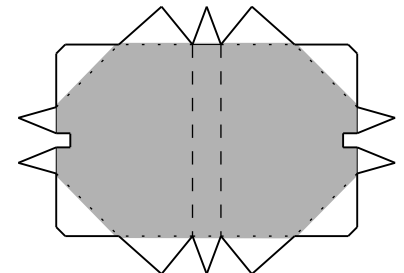
Glue cardboard fillers between the 2 sides.
Glue the 3 strips on the edges.



Blade filler template



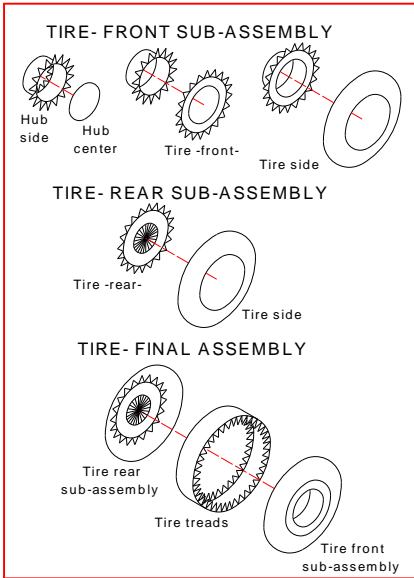
BLADE SLOT



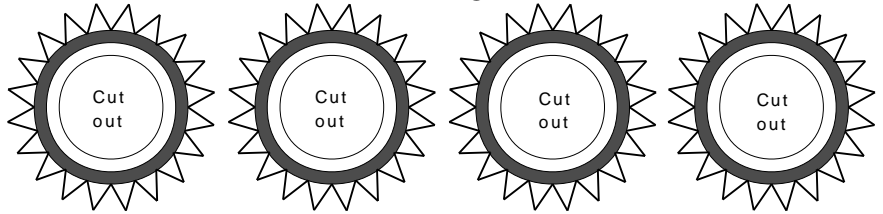
Cut a toothpick to 1" long. Glue the toothpick through the blade assembly and place into the cutouts of the blade slot. Glue inside chassis.

Model design by
RON CAUDILLO

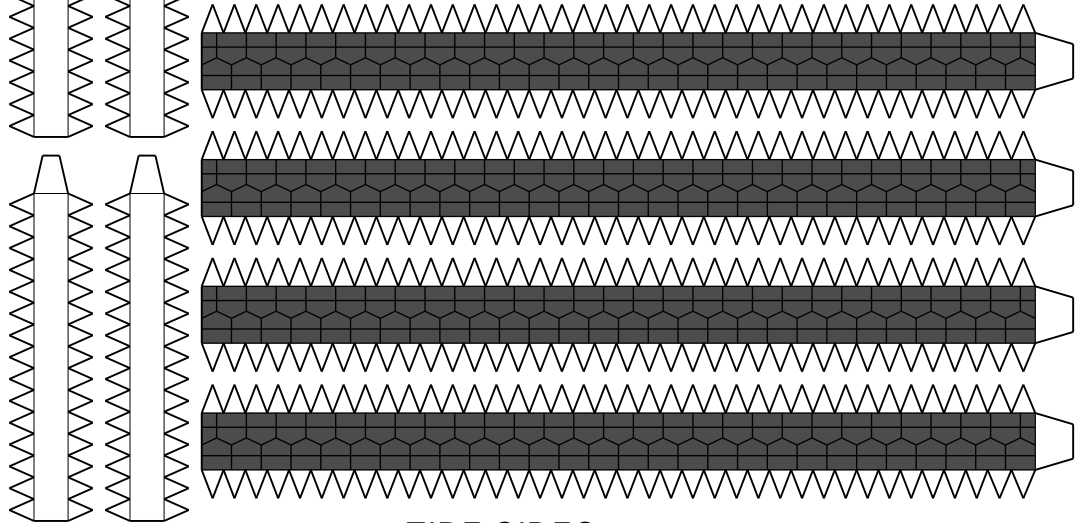
HUB SIDES



TIRE -FRONT-

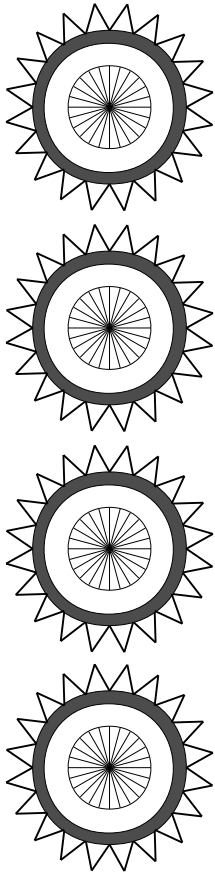


TIRE TREADS

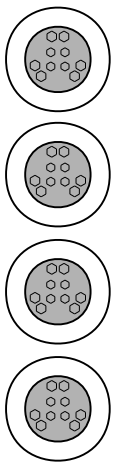


TIRE -REAR-

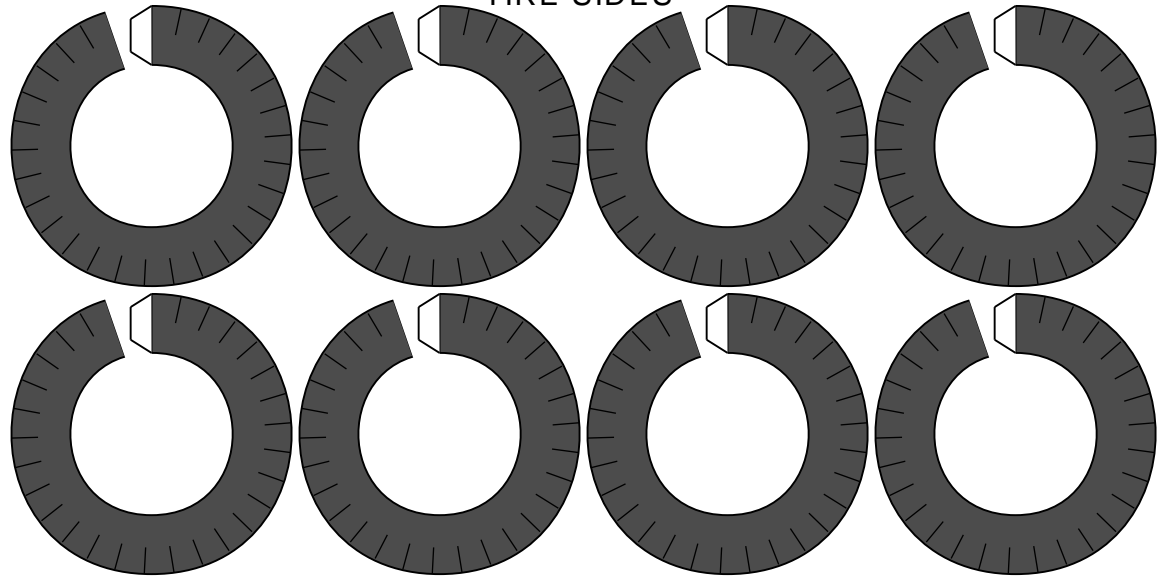
Cut along "spokes" in center



HUB CENTERS



TIRE SIDES



FRONT AXLE

FRONT AXLE

REAR AXLE

